

## About Us:

Loop Engineering is a full-service design firm that provides Engineering services to clients across an expansive range of markets and localities. Our multi-disciplinary services; Architecture, Civil Engineering, Land Surveying, Mechanical, Electrical and Plumbing; join forces, knowledge and experience to give you a single point of contact and a strong business relationship you can count on.

Loop Engineering is a professional and turnkey MEP Contracting Company offering services include Mechanical, Electrical, Plumbing, Fire Fighting and Specialized Systems to all over Bangladesh.

Whether state of art design & drafting or process of execution, our services resonate with perfection in every aspect. Our company focuses on offering tailor-made services that help you achieve your premeditated goals without delay.

Our Services are a perfect blend of cost-effectiveness, a top-notch quality that's in par with industry standards and time-bound MEP Engineering that is perfectly matched with our state of art infrastructures. Our Project Management team is proficiently managed by trained, experienced and skilled Project Managers who assume sole responsibility for satisfactorily completion of the project.

We believe in working closely with our clients to make sure every detail of the project is taken care of. Our Goal is customer satisfaction. Our services are result-oriented and process driven. We strive constantly to upgrade our technology to be in par with modern developments and provide our clients with best solutions.

Our long-term business association with our clients is a result of our customer-friendly MEP Services combined with efficient project management and wide range of options with flexibility.

We have our own Engineering team, who are able to make flexible and readily adjustments to any Architectural design, Structural design, assessment and evaluation for the Building, Fire and Electrical safety issues, as per Standard of Bangladesh National Building Code (BNBC).

Our business concept is one of its kind in Bangladesh. The idea of hassle-free one-stop design, construction, interior solutions with materials support has won the heart & minds of people. We consistently focus on client satisfaction ensuring the requirements are fulfilled beyond their expectation.

## **Our Vision:**

- Our main goal is to set a benchmark in the professional field
- To play a pioneering role in providing Engineering solutions with excellence
- Always committed to be innovative and maintain quality in order to meet the needs of our clients
- Understand client/customer requirements and decode them to suit our systems.
- To be caring and trustworthy for our stakeholders like our clients, employees and society in general
- Timely project execution and stringent budget control.
- To provide one-stop solution for design construction and real estate sector.

## **Our Mission:**

- To be a leader in Electro-Mechanical works in Bangladesh.
- To provide International standard services using best talents from Loop and abroad.
- To provide peerless services regarding engineering solutions as per our clients' desires.
- We are committed to work professionally and ethically with our honorable clients delivering quality services for the development of viable successful and sustainable projects.
- To develop and deliver value system to the clients with quality and reasonable cost with a focus on rapid progress.

## **Commitment To Quality**

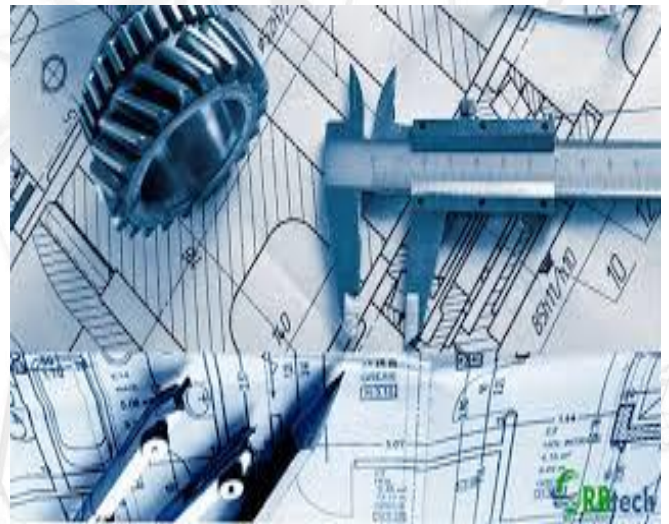
### **Quality Policy**

- Loop Engineering is committed to meeting Customer Requirements through continual improvement of its Quality Management System.
- Loop Engineering shall sustain Organizational Excellence through visionary leadership and innovative efforts.

## Mechanical Engineering

The Mechanical Engineering Division is involved in a very pro-active way to ensure that the project requirement is achieved. We are ready to carry out all diversified works including Central Air Conditioning, Plumbing, Drainage and Fire Protection with top quality, efficiency, productivity and to the satisfaction of our clients.

- Design and Build all works related to Mechanical Services
- Kitchen Hood and Exhaust system
- Fire Fighting /Protection System
- Mechanical Car Park Ventilation
- CO Monitoring and Control
- Fire Detection and Alarm
- FM200 & Deluge System
- Sheet Metal Fabrication
- Plumbing and Drainage
- Smoke Exhaust System
- HVAC



# PLUMBING & PUBLIC HEALTH ENGINEERING

- Hot & Cold-Water Supply System
- Water Filtration System
- Sewage Treatment
- Irrigation System
- LPG/Ng System
- Swimming Pool
- Rain Water
- Sanitation
- Drainage



## **Electrical Engineering Division**

- Installation of complete electrical systems for commercial, industrial and residential complexes.
- Installation of switchgear, pocket stations, RMUs, QRMs and TRMs
- Communication systems & Industrial process services
- Medium to high-voltage power networks
- Earth Networks and lightning protection
- Automatic Power Factor Control Panel
- Complete Generator Solutions
- Power Distribution Systems
- Complete Solar Solutions
- Power and Control Systems
- Data and Structured Cabling
- Home Automation
- HVAC Solution
- CCTV

## Commercial & Industrial Wiring:

We provide the following electrical wiring services and so much more:

Our residential services include electrical repurposing or remodeling, and new construction services for single-family Loops, condominiums, apartment buildings and multi-family Loops. We do whole house generator installation with power backup, install landscape lighting, additions to exterior lighting and exterior repairs, such as service cables and weather head repairs.

We do conversion of overhead electrical service to underground electrical service. Our local electrician performs all indoor electrical repairs such as adding plugs, switches, interior lighting and receptacles, and does wiring for residential additions, basement finishes and Loop remodels.



## **Electrical Maintenance:**

Maintenance involves fixing any sort of electrical device should it become out of order or broken (known as repair, unscheduled, or casualty maintenance).

Electrical maintenance means the care and checklist of electrical equipment/instruments to avoid any breakdown or fault. To tighten all electrical connections, to upgrade the power rating of safety switches is also a part of Electrical Maintenance.

Electrical maintenance services are offered at all levels, industrial, commercial and residential. Below are indicators on what our work involves.

### **We Offer Complete Electrical Maintenance Services:**

- Electrical re-wiring of houses, office blocks
- Repair of faulty lights, switches and plugs
- General electrical-related repairs
- Connection of hot water systems
- Assist with power supply issues
- Fault finding and repair of fault
- Repair of tripping switches
- Electrical reticulation







## **SOLAR SOLUTIONS**

Our competent installers will gladly advise you on all solar technology matters, help you to choose the system that's just right for you and after the installation will offer a comprehensive service.

**We Offer complete Solar Power Systems and Solar Power Products with Comprehensive Accessories for:**

- › Commercial & industrial applications
- › Stand-alone off-grid installations
- › Private residential buildings
- › Agricultural applications
- › Public buildings
- › Business
- › Investors

**Complete Solar Solution:**

- › PV Mounting parts
- › Solar panels
- › Inverters
- › Batteries



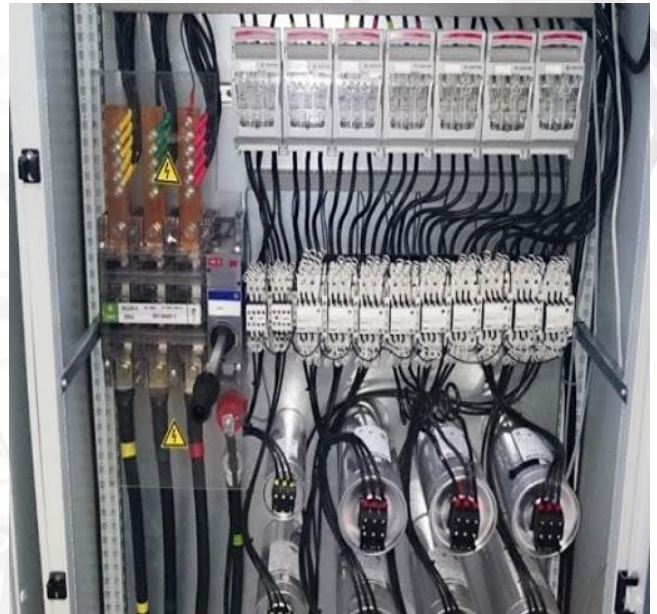
## APFC Panel:

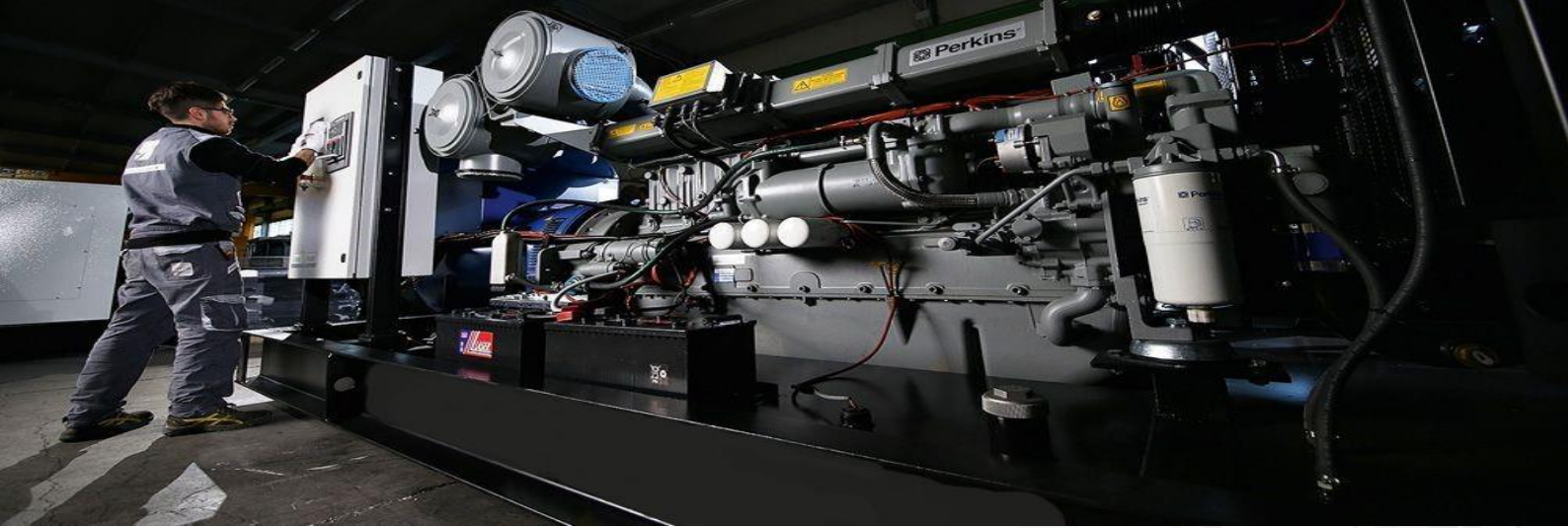
Power factor correction (PFC) is a newer technology used in computer power supplies. PFC is applied to the circuits that include induction motors as a means of reducing the inductive component of the current and thereby reducing the losses in the supply. PFC has no effect on the operation of the motor itself.

We minimize downtime incurred as a result of the installation of our equipment, through careful planning and consultation with our customers. After the required hardware is installed, you will notice an immediate improvement in power factor, more efficient use of your available electrical power and of course monthly savings in your electricity bills.

The main features of our control panels are:

- Easy to use
- Long-lasting
- High efficiency
- Corrosion-resistant
- Electrical insulation
- In-built independent fuses
- Minimizes harmonic current
- Protects electrical equipment
- Clearly marked buttons and indicators
- Maintains High Power Factor constantly
- Protection from excess power in the system.
- Prevents leading Power Factor in low load conditions





## Generator Solutions:

An electric generator is a device that converts mechanical energy obtained from an external source into electrical energy as the output. Generators are useful appliances that supply electrical power during a power outage and prevent discontinuity of daily activities or disruption of business operations. Generators are available in different electrical and physical configurations for use in different applications.

Our competent installers will gladly advise you on all generator technology matters, help you to choose the system that's just right for you and after installation will offer you comprehensive service.

## Complete Generator Solutions:

- Generator Sales
- Generator Services
- Generator Re-fuels
- Change Over-panels

## Our Valuable Partner:



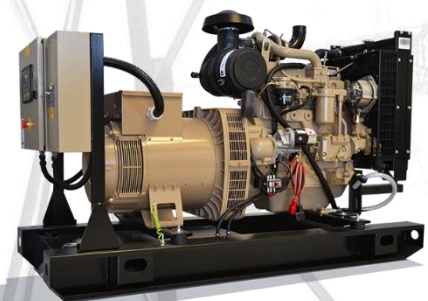
## Generator:

The power range of our Diesel Generating set is from 5 KW to 2500 KW. Its coupled by the world-famous brand Generator Such as Forest City, Welland Power, Aksa Excel Power etc. Engine Brand such as PERKINS (England), CUMMINS (America), DEUTZ (German), VOLVO etc. with world-famous Alternator Brand such as- STAMFORD (UK), MACCALTE (Italy), LEROY SUMER (France), MARATHON etc. We are also can supply the most Generating sets couple by Chines Famous Engine brands such as LOVOL PERKINS, WEICHAI, RICARDO, WEIFANG etc Alternator Brand Copy Stamford.

We provide 24x7 Generator service & offer free consultancy for generator selection & service on warranty period.

- Paralleling Switchgear
- Transfer Switch
- Gas Generators
- Diesel Generators
- Power Plant
- Rental

### Our Valuable Partner :



## Battery & Inverter Solutions:

We are manufacturers, Distributors & Importers of IPS Items based in Bangladesh. We are Pioneer of Manufacturing of IPS inverter device for our Local Market which is very much popular & good in quality & well accepted to the Customers. We also Distribute & Import various Types of Instant Power Supply (IPS) - Bangladesh products for our Customers in Bangladesh. we sales long backup ups also, all kinds of inverter sales, Instant Po Supply (IPS) inverter 1-year warranty.



## Complete Battery & Inverter Solutions:

- Battery & Inverter Sales
- Battery & Inverter Installations
- Battery & Inverter Maintenance
- Battery & Inverter Replacements

## Our Valuable Partner :

# HT SWITCHGEAR



## HT Switchgear:

High Tension Switchgears are suitable for Electrical Sub-Station with Transformer feeders, measuring, sectionalizing, ring main unit and motor protection. To meet individual requirements which comply with IEC/BS & another relevant international standards; it has features of long service life, reliability & high degree of quality & safety.

### Key Features:

- Manual or motor-charged main closing mechanism
- Complete set of Interlocks & Padlocks facilities
- Ampere-Current Transformer accommodation
- Extensive use in tropical environments
- Long maintenance-free operation
- Isolatable Voltage Transformer
- Busbar system fully insulated
- Fully rated with switches
- Fully metal-clad design
- Horizontal isolation
- Safety Interlocks

### Our Valuable Partner :



The logo for Siemens, consisting of the word 'SIEMENS' in a white, sans-serif font on a green rectangular background.

# LT SWITCHGEAR



## LT Switchgear:

The Low Tension Switchgear comprises of Air Circuit Breaker(ACB), Moulded Case Circuit Breaker(MCCB), Fuse Switch Unit, Disconnected etc. To meet individual requirements which comply with IEC/BS & other relevant international standards.

Switchgear panels are designed & manufactured for Indoor & Outdoor, Fixed type or fully draw-out type with frame structure for modular construction for easy Extension & Coupling Depending on the condition of installation.

- Elegant & sleek in appearance
- In single door & double door version
- Designed for floor mounting/wall mounting
- Specially designed shrouded bus bar provides safety
- Number of ways option permits future system expansion
- Readymade & Customized Solutions for Load Management
- Use of quality raw materials & sourcing from reputed manufacturers
- Modular construction & compact size provides economy of space, time & cost

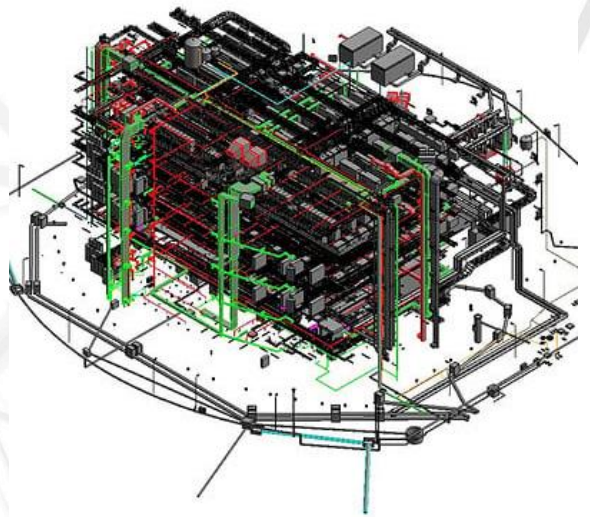
## Our Valuable Partner :



## Electrical System Design & Drawing:

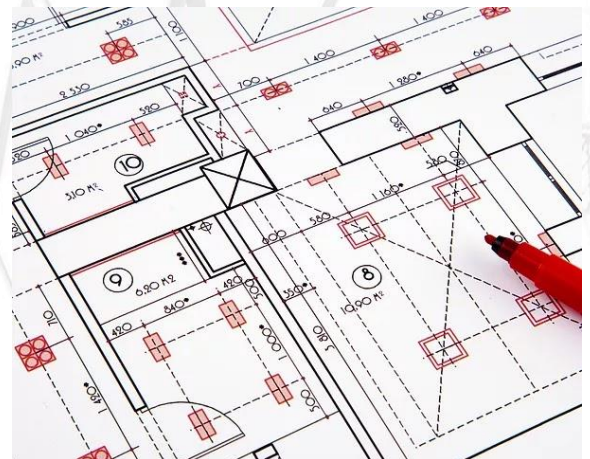
We provide electrical working design and drawing to consist of “lines, symbols, dimensions and other engineering details to accurately convey an engineering design to the workers, who install the electrical system on the job. Our qualified engineering team makes sure 100% customer satisfaction with electrical service and consultancy without compromising the engineering Standard such as BNBC, NFPA, NETA, NEC, BS, Accord, Alliance and other engineering details.

- Transformer Selection
- Cable Sizing & Tray Design
- Panel Board Selection (MDB, SDB, SMDB)
- Selection of Solar Panels, Solar Battery, Solar Regulators



## Complete Design & Drawing Solutions:

- Conduit Design
- Power Distribution Systems
- Lighting Distribution Systems
- Single Line Diagram [SLD]
- Lightning Arrester Design [LAD]
- Electrical Layout Drawing [ELD]
- Machine Layout Drawing [MLD]
- Lightning Protection System [LPS]
- Designing Fire Protection System
- Electrical Load Management Program
- Earthing System Or Grounding System Design





## Automation & Control:

We can complete full system installations and take you from the design/build stage to installation and through to production. Trust in our full-service custom solutions, leading technology and best practices tailored to your automation requirements and environment.

## Complete Automation Solutions:

- Office & Conference Room Automation
- Building Automation Solutions
- Lighting Automation Solutions
- Factory Automation Solutions
- Hotel Automation Solutions
- Vehicle Tracking Solutions
- Class Room Automations



## Our Valuable Partner :

**Honeywell**

**Schneider**  
Electric

**MITSUBISHI**  
**ELECTRIC**

**SIEMENS**  
Siemens Automation & Drives

**ABB**

## Fire & Safety:

Our success is driven by our "passion to protect", our vision is to become the world's number one provider of innovative solutions for protecting life, environment and property.

- Extinguishing & Suppression System
- Fire Protection System Installation
- Fire Equipment Design & Selection
- Fire Hose Reel & Cabinet Design
- Fire Monitoring Station Design
- Fire Detection System Design
- Fire Sprinkler System Design
- Fire Hydrant Pipe Design
- Fire Pumps & Controllers
- Fire Fighting Equipment
- Safety training
- Fire Doors



### Our Valuable Partner :





## CCTV Camera Solutions:

Our Solution technology includes Computer DVR Base CCTV Surveillance, Embedded System DVR (Digital Video Recorder), Modern TCP/IP NVR (Network Video Recorder) Base Surveillance Solutions in Bangladesh. Why should an Enterprise have CCTV in Bangladesh (Surveillance System) Video surveillance or CCTV in Bangladesh has proven to be a sound investment in spite of an expensive solution.

## Out Project Steps Goes throw:

- Site Survey
- Project Planning
- Products & Accessories Handover
- Cabling & Installation
- CCTV System Configuration and Testing
- System Performance Analysis and Tuning
- CCTV Monitoring Systems Prepare
- CCTV Project Handover



Our Valuable Partner :



# HVAC Solutions

## HVAC Solutions:

- Understanding the specific requirements from clients & LEED
- Mechanical Ventilation System Design for general areas
- Humidity control & Low humidity control room design
- Conceptual layout design for Pharmaceuticals Industry
- Ventilation Designing – Toilet, Kitchen, Car Parking
- Air Ventilation & Air Filtration System Design
- Chilled Water & Cooling Tower Pipe Design
- Package AC, DX Units, Split AC Design
- Stair Well Pressurization System Design
- HVAC equipment Supply & Installation
- Air Cooling System Design for offices
- AHU & Pump Room Design
- All kinds of HVAC Filter
- HVAC Duct Design
- Expansion Tank Design
- Refrigerant Pipe Sizing for DX Sytems
- ESP Calculations for Blower Fan Selection
- Bill of Quantity, Estimation & Costing of a Project
- Schematic, Section, Isometric, Schedule Drawing Sump Design



Our Valuable Partner :



SAMSUNG



## Electric Cables & Wires:

If you are looking for Insulated Electrical Wires suppliers or manufacturers you have come to the right place. We have developed the largest database of leading Cables & Wires manufacturers worldwide, enabling you to get in direct contact with top-rated a seller in any region of your choice. Your purchased items are kept under strict quality guidelines. We only deal with the highest quality Electrical & Electronics suppliers & products.

- Mounting & Cable Accessories
- Industrial Wires & Cables
- PVC Pipes & Accessories
- Low Tension Cables
- High Tension Cables
- Telephone cables



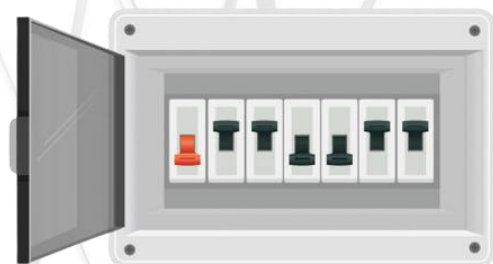
### Our Valuable Partner :



## Electric Wiring Accessories:

If you are looking for Industrial, Commercial and Electrical Switch manufacturers you have come to the right place. We have developed the largest database of leading Cables & Wires manufacturers worldwide, enabling you to get in direct contact with top-rated a seller in any region of your choice. Your purchased items are kept under strict quality guidelines. We only deal with the highest quality Electrical & Electronics suppliers & products.

- Switches
- Sockets
- Conduit Pipe
- Junction Boxes
- Plugs & Fuses
- Bend & Sockets
- Circuit Breakers
- Grid & Modular Wiring



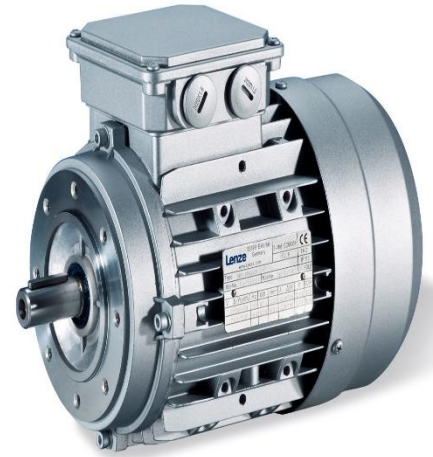
### Our Valuable Partner :



## Electrical Motors:

If you are looking for Industrial, Commercial and Electrical Switch manufacturers you have come to the right place. We have developed the largest database of leading Cables & Wires manufacturers worldwide, enabling you to get in direct contact with top-rated a seller in any region of your choice. Your purchased items are kept under strict quality guidelines. We only deal with the highest quality Electrical & Electronics suppliers & products.

- Servo Motor
- Linear Motor
- Stepper Motor
- Induction Motor
- Synchronous Motor
- Asynchronous Motor

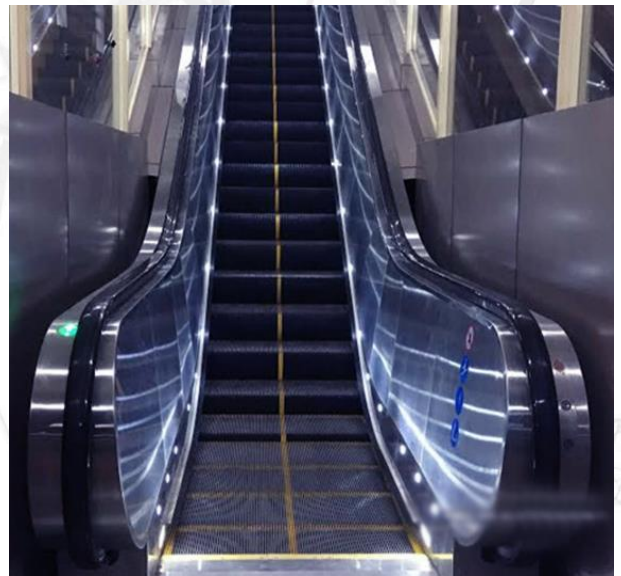


### Our Valuable Partner :



## Elevators:

We supply world-famous Elevator Brand such as FUJIHD, NOVA, SUNNY, SIGMA, Safe Elevator, Aolida etc. in Bangladesh. DP high-speed elevators are designed to keep pace with the vertical growth of cities as buildings soar to ever greater heights. Our elevators guarantee high levels of passenger safety and comfort, and can be customized for diverse applications including office buildings, hotels and shopping centers. We can tailor specifications to meet your exact needs and add a distinctive touch that sets your building apart from the rest. We ensure good quality accessories of Elevator.



We have different brand Lift such as:

- ✓ Fuji Elevator
- ✓ Hyundai Elevator
- ✓ Schneider
- ✓ Mitsubishi Elevator

## Our Valuable Partner :





## **Plumbing & Sanitary Solutions:**

- Sump Design
- Manhole Design
- Pump Room Design
- Pressure Tank Sizing
- Overhead Tank Design
- Auto Pneumatic System
- Drainage Water Pipe Design
- Water Treatment Plant Design
- Storm Water Drainage Design
- Sewerage Treatment Plant Design
- Equipment Selection & Its Accessories
- Garden & Fountain Water Pipe Sizing
- Hot Water Estimation, Heater Capacity Selection
- Septic tanks, Soak Away Pits, Dispersion Trenches
- Understanding the specific Requirements from client & LEED

## **Contract Us**

**Company Name** : Loop Engineering

**Head Office** : 210 Senpara Parbata, Begum Rokeya Sarani,  
Mirpur-10, Dhaka – 1216

**Chittagong Office** : Level 6, Chattogram Software Technology  
Park, Agrabad, Chattogram.

**Mobile** : 01889882001 & 09611547290

**Email** : [info@loopbd.com](mailto:info@loopbd.com)

**Website** : [www.loopbd.com](http://www.loopbd.com)

**Facebook** : [Facebook.com/loopengineeringbd](https://www.facebook.com/loopengineeringbd)

**Whatsapp** : 01889882001



Chattogram Software Technology park, Agrabad, Chattogram.  
09611547290 || [www.loopbd.com](http://www.loopbd.com)