

**COMPANY  
PROFILE**



**LOOP**  
Engineering



**Loop Engineering** is a reputable MEP contracting company in Bangladesh, offering comprehensive engineering services. With a focus on customer satisfaction, we provide tailor-made solutions that prioritize cost-effectiveness, quality, and timely project completion. Our team of experienced Project Managers ensures the highest level of service and oversees all aspects of MEP Engineering. We stay at the forefront of technology, continuously upgrading our systems to deliver innovative solutions. Our customer-friendly approach includes efficient project management and flexibility to accommodate unique client requirements. We stand out with our one-stop business concept, offering seamless design, construction, and interior solutions with comprehensive materials support.

### **Our Vision:**

Our goal is to set a benchmark in the professional field by providing Engineering solutions with excellence, being innovative and maintaining quality, understanding client/customer requirements, being caring and trustworthy for stakeholders, timely project execution and stringent budget control, and providing one-stop solutions for design construction and real estate sector.

### **Our Mission:**

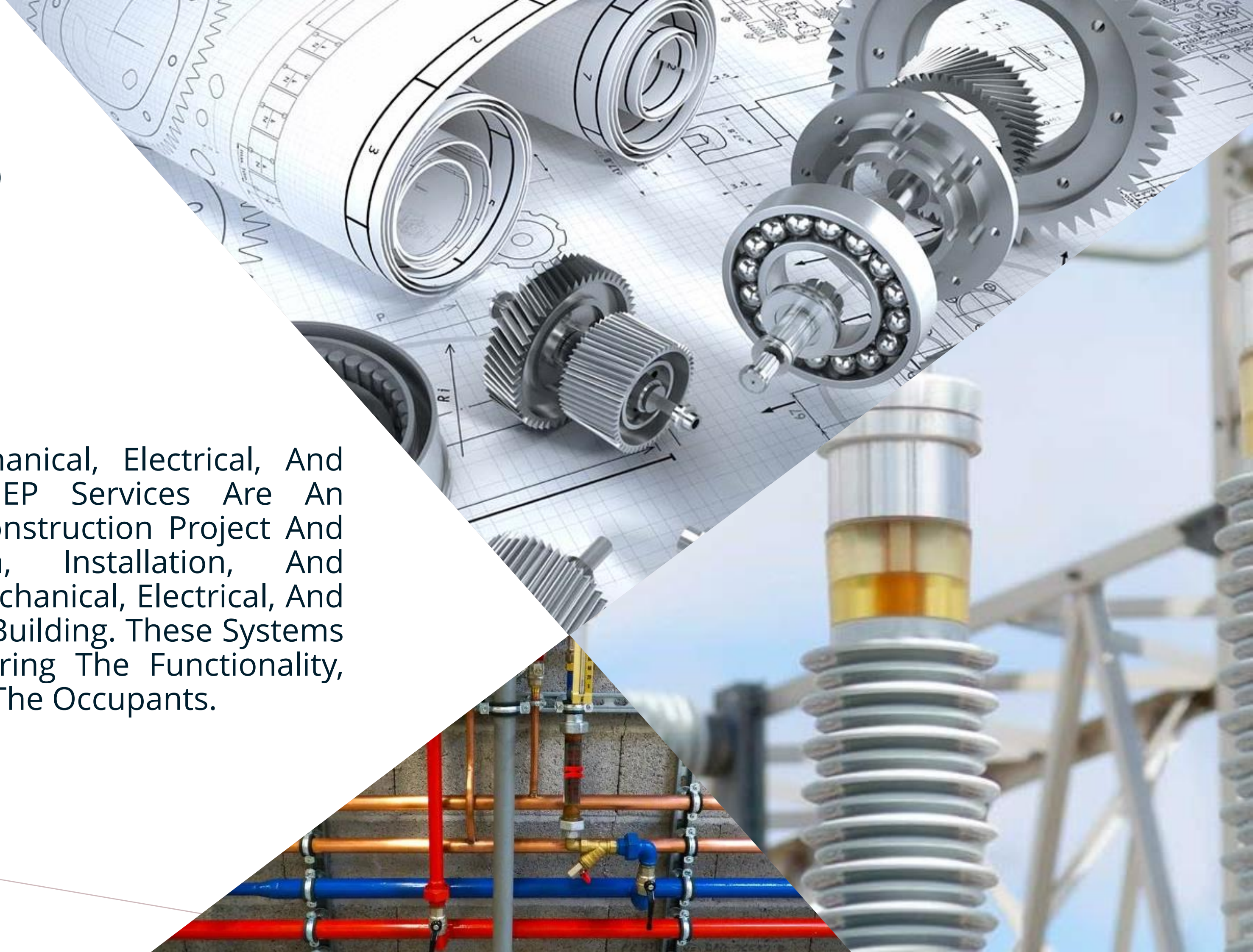
We aim to be a leader in Electro-Mechanical works in Bangladesh, providing quality services and engineering solutions to our clients. We strive to work ethically and professionally with our clients, delivering quality services at reasonable costs

### **Quality Policy**

- Loop Engineering is committed to meeting Customer Requirements through continual improvement of its Quality Management System.
- Loop Engineering shall sustain Organizational Excellence through visionary leadership and innovative efforts.

# Our MEP Services

MEP Stands For Mechanical, Electrical, And Plumbing Services. MEP Services Are An Integral Part Of Any Construction Project And Involve The Design, Installation, And Maintenance Of The Mechanical, Electrical, And Plumbing Systems In A Building. These Systems Are Essential For Ensuring The Functionality, Comfort, And Safety Of The Occupants.





# Mechanical Engineering

The Mechanical Engineering Division is involved in a very proactive way to ensure that the project requirement is achieved. We are ready to carry out all diversified works including Central Air Conditioning, Plumbing, Drainage and Fire Protection with top quality, efficiency, productivity and to the satisfaction of our clients.

- ❖ Design and Build all works related to Mechanical Services
- ❖ Kitchen Hood and Exhaust system
- ❖ Fire Fighting /Protection System
- ❖ Mechanical Car Park Ventilation
- ❖ CO Monitoring and Control
- ❖ Fire Detection and Alarm
- ❖ FM200 & Deluge System
- ❖ Sheet Metal Fabrication
- ❖ Plumbing and Drainage
- ❖ Smoke Exhaust System
- ❖ HVAC



# Electrical Engineering Division

- ❖ Installation of complete electrical systems for commercial, industrial and residential complexes.
- ❖ Installation of switchgear, pocket stations, RMUs, QRM and TRMs
- ❖ Communication systems & Industrial process services
- ❖ Medium to high-voltage power networks
- ❖ Earth Networks and lightning protection
- ❖ Automatic Power Factor Control Panel
- ❖ Complete Generator Solutions
- ❖ Power Distribution Systems
- ❖ Complete Solar Solutions
- ❖ Power and Control Systems
- ❖ Data and Structured Cabling
- ❖ Home Automation
- ❖ HVAC Solution
- ❖ CCTV

A collection of plumbing parts including a braided metal hose with a yellow O-ring, a metal pipe with a yellow O-ring, a metal pipe with a yellow O-ring, a metal pipe with a yellow O-ring, a metal pipe with a yellow O-ring, and a technical drawing of a pipe fitting with dimensions like  $\phi 20$  and  $\phi 25$ .

# Plumbing & Public Health Engineering

- ❖ Hot & Cold-Water Supply System
- ❖ Water Filtration System
- ❖ Sewage Treatment
- ❖ Irrigation System
- ❖ LPG/Ng System
- ❖ Swimming Pool
- ❖ Rain Water
- ❖ Sanitation
- ❖ Drainage

# *SOLAR SOLUTION*

Our competent installers will gladly advise you on all solar technology matters, help you to choose the system that's just right for you and after the installation will offer a comprehensive service. We Offer complete Solar Power Systems and Solar Power Products with Comprehensive Accessories for:

- ❖ Commercial & industrial applications
- ❖ Stand-alone off-grid installations
- ❖ Private residential buildings
- ❖ Agricultural applications
- ❖ Public buildings
- ❖ Business
- ❖ Investors



# *GENERATOR SOLUTION*

The power range of our Diesel Generating set is from 5 KW to 2500 KW. Its coupled by the world-famous brand Generator Such as Forest City, Welland Power, Aksa Excel Power etc. Engine Brand such as PERKINS (England), CUMMINS (America), DEUTZ (German), VOLVO etc. with world famous Alternator Brand such as STAMFORD (UK), MACCALTE (Italy), LEROY SUMER (France), MARATHON etc. We are also can supply the most Generating sets couple by Chines Famous Engine brands such as LOVOL PERKINS, WEICHAJ, RICARDO, WEIFANGetc Alternator Brand Copy Stamford.

We provide 24x7 Generator service & offer free consultancy for generator selection & service on warranty period





# *HT & LT SWITCHGEAR*

High Tension Switchgears are suitable for Electrical Sub-Station with Transformer feeders, measuring, sectionalizing, ring main unit and motor protection, complying with IEC/BS & other international standards. They have long service life, reliability & high degree of quality & safety. Switchgear panels are designed & manufactured for Indoor & Outdoor, Fixed type or fully draw-out type with frame structure for modular construction.

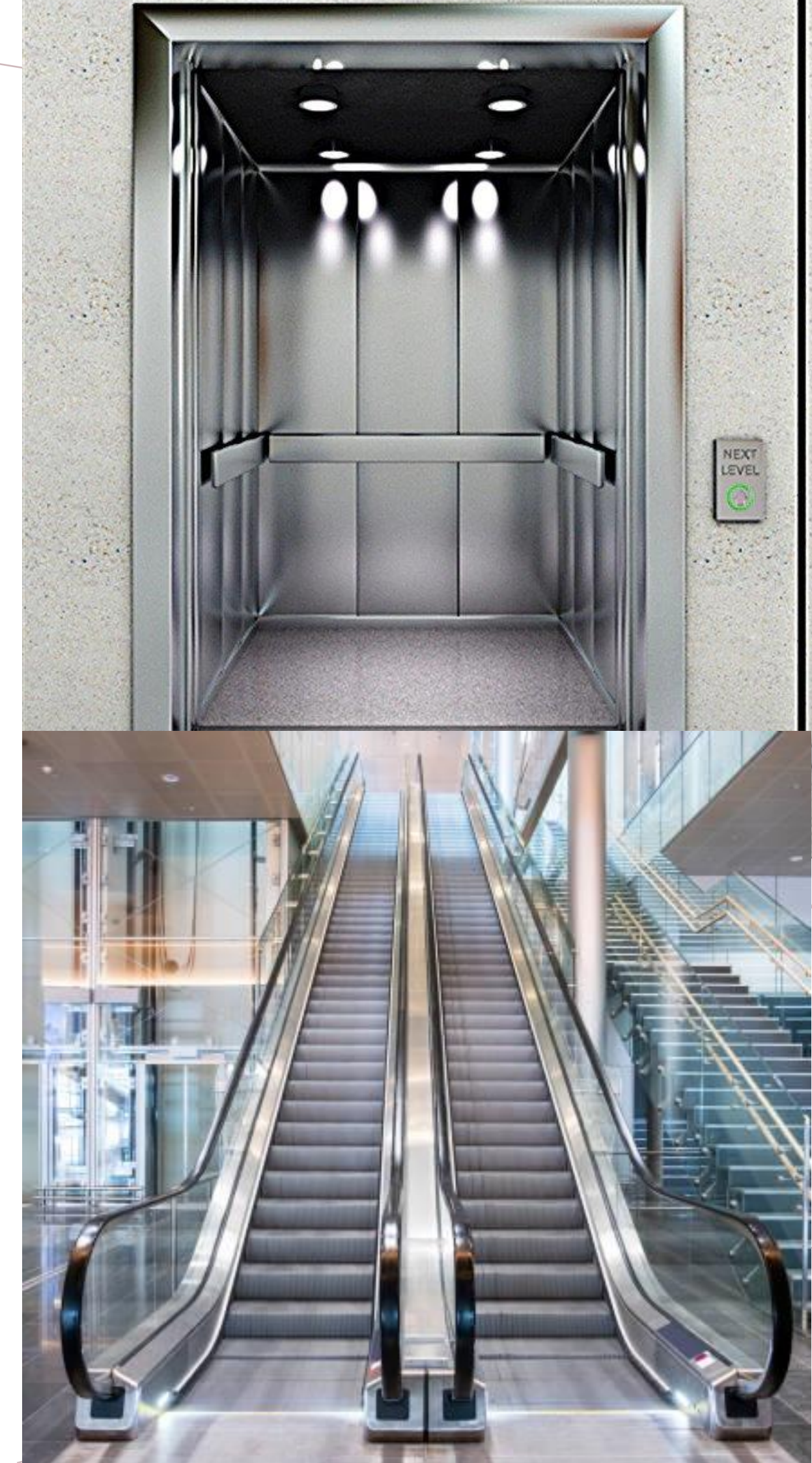
- ❖ MCB
- ❖ MCCB
- ❖ ACB
- ❖ VCB
- ❖ SF6



# *ELEVATORS*

We supply world-famous Elevator Brand such as FUJIHD, NOVA, SUNNY, SIGMA, Safe Elevator, Aolida etc. in Bangladesh. DP high-speed elevators are designed to keep pace with the vertical growth of cities as buildings soar to ever greater heights. Our elevators guarantee high levels of passenger safety and comfort, and can be customized for diverse applications including office buildings, hotels and shopping centers. We can tailor specifications to meet your exact needs and add a distinctive touch that sets your building apart from the rest. We ensure good quality accessories of Elevator. We have different brand Lift such as:

- ✓ Fuji Elevator
- ✓ Hyundai Elevator
- ✓ Schneider
- ✓ Mitsubishi Elevator



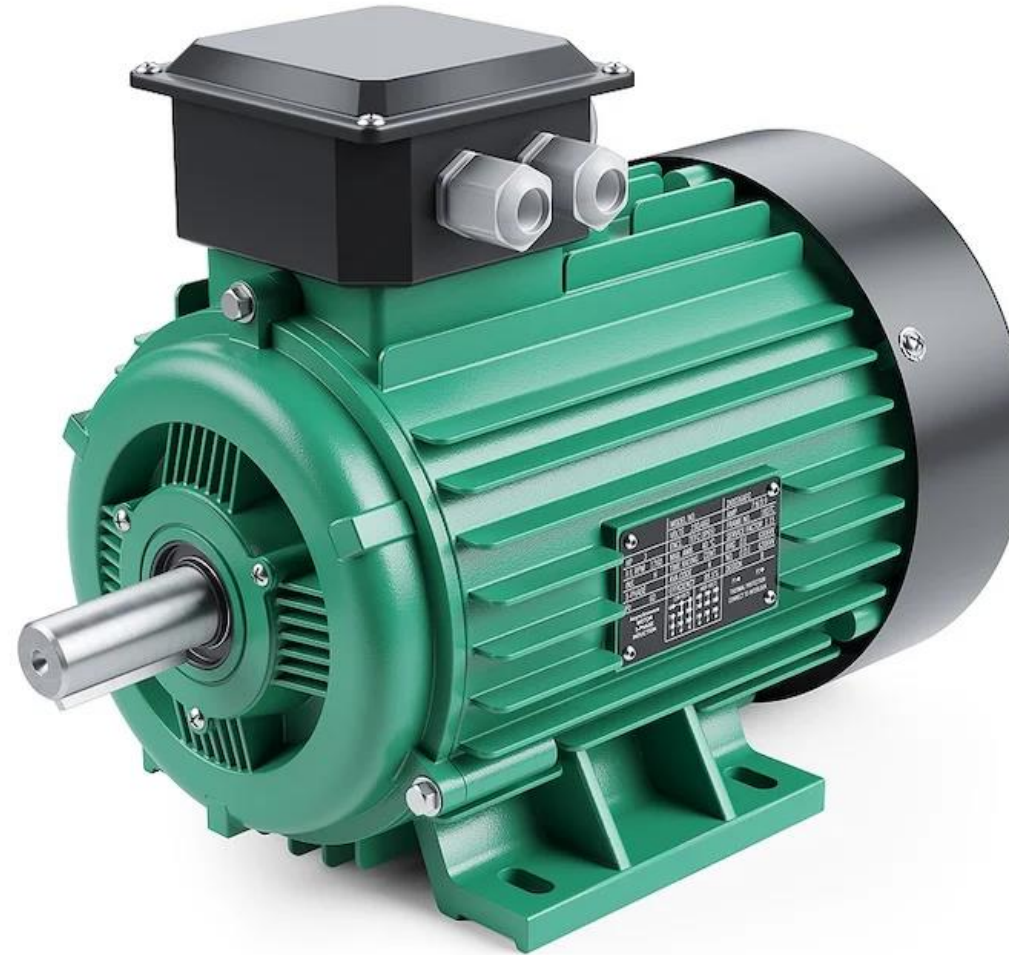
# *HVAC SOLUTION'S*

- ✓ Mechanical Ventilation System Design for general areas
- ✓ Humidity control & Low humidity control room design
- ✓ Conceptual layout design for Pharmaceuticals Industry
- ✓ Ventilation Designing – Toilet, Kitchen, Car Parking
- ✓ Air Ventilation & Air Filtration System Design
- ✓ Package AC, DX Units, Split AC Design
- ✓ Air Cooling System Design for offices
- ✓ AHU & Pump Room Design
- ✓ HVAC Duct Design
- ✓ Refrigerant Pipe Sizing for DX Systems
- ✓ ESP Calculations for Blower Fan Selection
- ✓ Bill of Quantity, Estimation & Costing of a Project



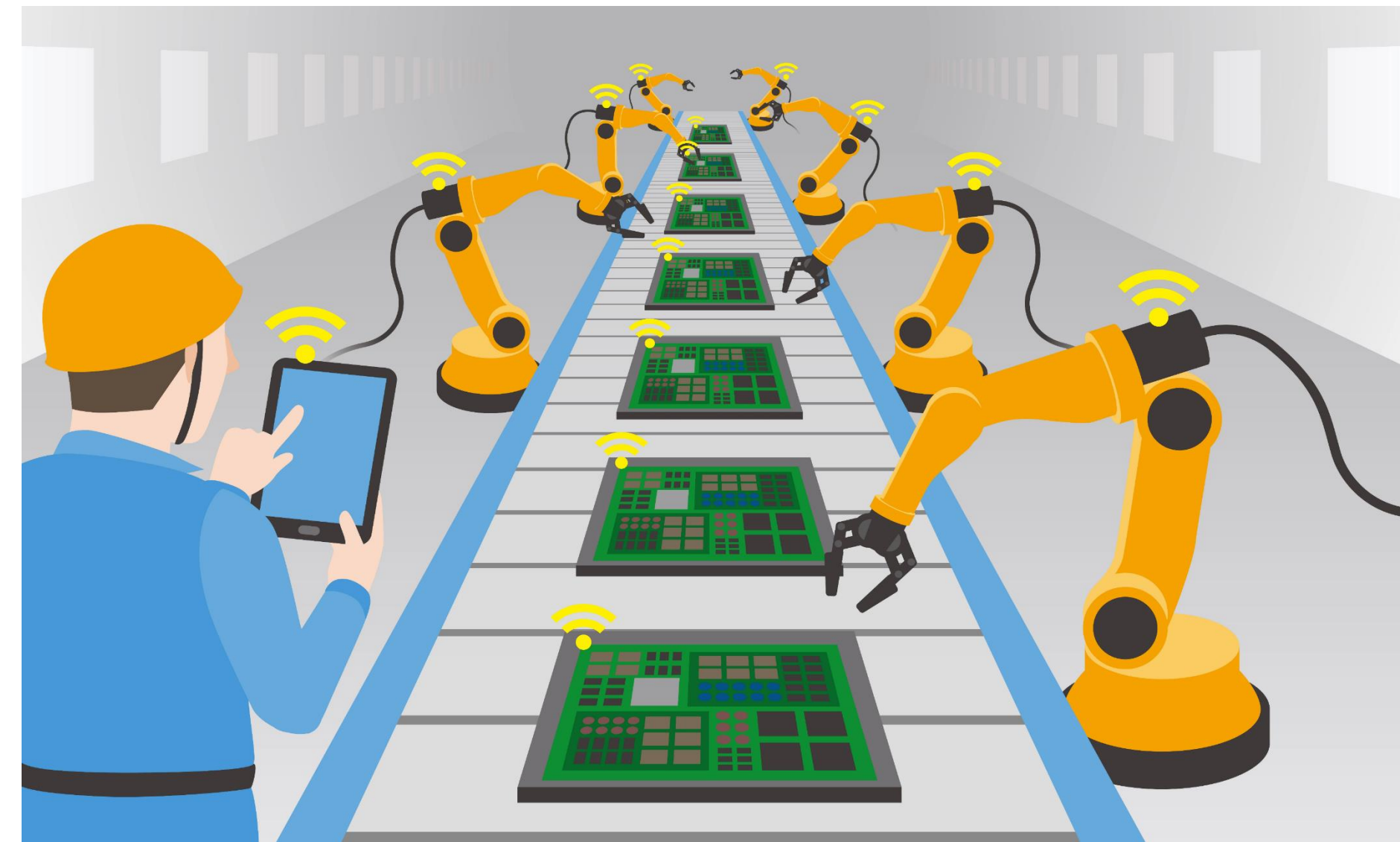
# *ELECTRICAL MOTOR & ACCESSORIES*

- ✓ Servo Motor
- ✓ Linear Motor
- ✓ Stepper Motor
- ✓ Induction Motor
- ✓ Synchronous Motor
- ✓ Asynchronous Motor
- ✓ Switches
- ✓ Sockets
- ✓ Conduit Pipe
- ✓ Plugs & Fuses
- ✓ Bend & Sockets
- ✓ Circuit Breakers
- ✓ Grid & Modular Wiring



# *CCTV CAMERA & AUTOMATION*

- ✓ Site Survey
- ✓ Project Planning
- ✓ Products & Accessories Handover
- ✓ Cabling & Installation
- ✓ CCTV System Configuration and Testing
- ✓ System Performance Analysis and Tuning
- ✓ CCTV Monitoring Systems Prepare
- ✓ CCTV Project Handover
- ✓ Office & Conference Room Automation
- ✓ Factory Automation Solutions
- ✓ Hotel Automation Solutions
- ✓ Vehicle Tracking Solutions
- ✓ Class Room Automations

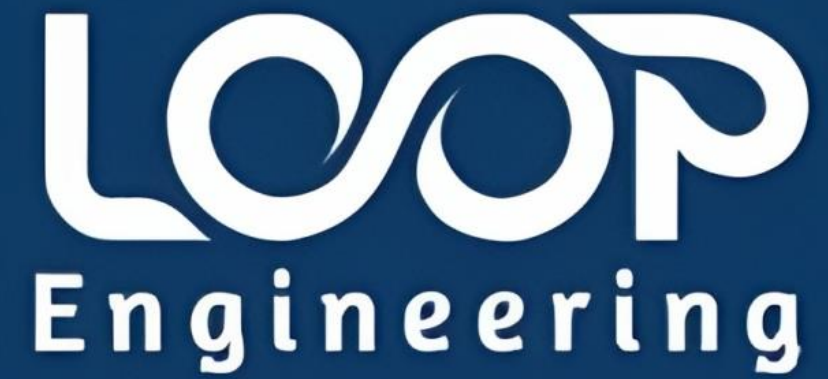


# *FIRE & SAFETY*

Our success is driven by our "passion to protect", our vision is to become the world's number one provider of innovative solutions for protecting life, environment and property.

- ✓ Extinguishing & Suppression System
- ✓ Fire Protection System Installation
- ✓ Fire Equipment Design & Selection
- ✓ Fire Hose Reel & Cabinet Design
- ✓ Fire Monitoring Station Design
- ✓ Fire Detection System Design
- ✓ Fire Sprinkler System Design
- ✓ Fire Hydrant Pipe Design
- ✓ Fire Pumps & Controllers
- ✓ Fire Fighting Equipment





Head Office :

210 Senpara Parbata, Begum Rokeya  
Sarani, Mirpur-10, Dhaka – 1216

CTG Office:

Level 6,  
Chattogram Software Technology Park,  
Agrabad, Chattogram.

01816873323 || 09611547290

Facebook.com/loopengineeringbd

www.loopbd.com

*THANK YOU*

*ANY QUESTIONS*

*?*