

LOOP ENGINEERING

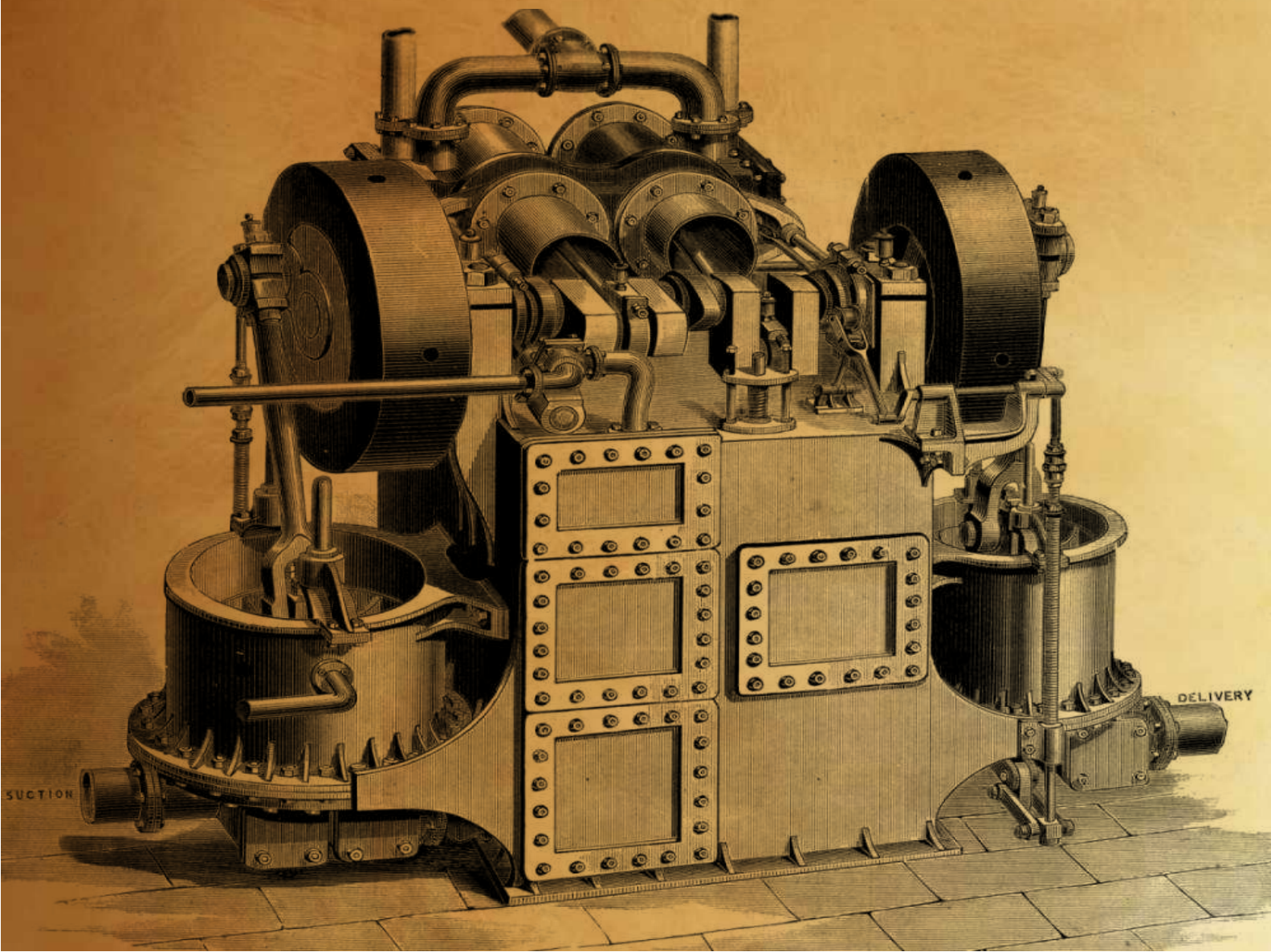


LOOP

Engineering

Loop Engineering Ltd. is MEP engineering company in Bangladesh moving forward with a clear vision to be the best Design, supply & solution provider in engineering sector. We are delighted to introduce Loop Engineering, a leading engineering company specializing in Electro-Mechanical Design, Sanitary & Plumbing Design, and Fire Fighting Design solutions. We pride ourselves on delivering high-quality services, customized to meet your specific project requirements.

We believe that partnering with Loop Engineering will not only meet but exceed your expectations. Our experienced team is dedicated to delivering exceptional engineering solutions, ensuring the successful completion of your project.





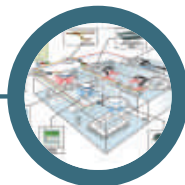
Why LOOP

Expert in
HVAC 360 Solution



Proficient in HVAC
Solutions for green building
As per Leed Guideline.

We also follow
World green building
Council code



Skilful on all kinds of
VRF & CHILLER

Energy Efficient product



Efficient Design Solutions

Trained HVAC designers



Well Equipped & Highly
Skilled installation team

Call centre for
After Sales Service



Digital Display Solutions



Building Management System
(Automation)

Next Generation VRF DC INDOOR UNITS

360° Smart Air Flow

- The world first true Circular design
- Cold Draft Free
- Perfect Even Cooling
- Bladeless design with no loss of airflow
- Circular to perfectly fit everywhere
- All round simpler & intuitive control



One-way Cassette

- World thinnest indoor Air-cooling unit
- Height of only 135mm
- Light weight design makes installation easier by 30 percent compare to regular designs
- This unit blends seamlessly into interiors of all types and style

Two-way Cassette

- Two-way air discharge, perfect for limited ceiling space
- Easy to set the ideal indoor climate even in uniquely Seized Spaces
- Right solution for long, narrow places such as corridors and class room
- Comfort levels is just as simple with optimum temperature control and self-Diagnosis mode
- This unit save up to 26 percent more space when compared to conventional 4way cassette



Four-way Cassette

- The optional motion detection sensor (MDS) for 4 way cassette saves energy when people are absent from the area and atomically stops the air-conditioning
- Four-way airflow, allows wide-angle
- Energy Saving by providing the right amount of air flow
- 4 way cassette features a remote controller that enables users to manipulate the angel of the fan blades for more efficient cooling
- 4 way cassette indoor unit is lighter in weight at 11 kg.it is lightest indoor unit in the industry

Next Generation VRF DC INDOOR UNITS

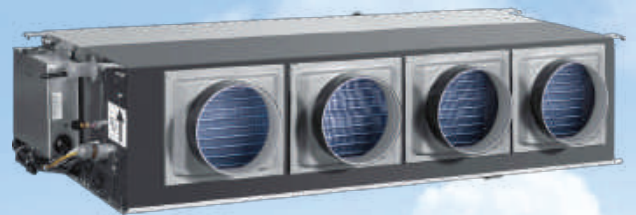


Slim Duct

- Control temperature in any environment with industry's lightest design and optimized airflow
- Flexible setup
- Various installation options
- Easy access, easy maintenance
- Simple drain pump installation

Medium Static Pressure Duct

- Fresh air intake
- 6-step static pressure control on 2.2kW to 7.1kW models and 10-step static pressure control on 8kW to 14kW units (requires latest generation wired controllers)
- Drain pump with 750mm pump head fitted as standard
- Flexible installation for the air inlet may be positioned either on the underside or the rear of the unit



High Static Pressure Duct

- External static pressure up to 400Pa facilitates extensive duct and grille network
- 20-step static pressure control on all models (requires latest generation wired controllers)
- A double-skin drainage pan provides double protection for ceilings (models 71 to 160)
- Drain pump with a 750mm pump head available as a customization option

Fresh Air Processing Unit

- 100% fresh air processing unit, both fresh air filtration and heating/cooling can be achieved in a single system
- External static pressure up to 400 Pa facilitates extensive duct and grille network
- 20-step static pressure control on all models (requires latest generation wired controllers)
- Drain pump with a 750mm pump head available as a customization option



ERV / ERV Plus

Superior energy savings

Drive energy savings with unparalleled heat exchange and automated temperature control

ERV and ERV Plus deliver exceptional cooling and heating all year round by employing the following heat recovery method:

- A 2-way ventilation design with air inlets and outlets on both sides of the units provides superior ventilation efficiency.
- The remaining surface of the heat exchange area transfers heat energy while preventing the discharged contaminants from reentering.
- The system recovers up to 70 percent of the energy needed to cool or heat the environment. The efficient heat recovery maintains the indoor temperature and humidity during the winter, and prevents outdoor heat and moisture from entering indoors during the summer.

Damper

The mode can be switched between heat recovery ventilation and normal ventilation. (Availability varies on the type of model.)

Supply/Exhaust Fan

The fan is used to intake outdoor air or exhaust indoor air.

Temperature Sensor

Detects indoor and outdoor temperature to switch to auto mode or execute cold climate control function.

Dust Filter

Prevents heat exchanger element contamination or blockage caused by accumulated dust.

Heat Exchanger Element

Exchange temperature and humidity between the supply and exhaust air.

Control Box

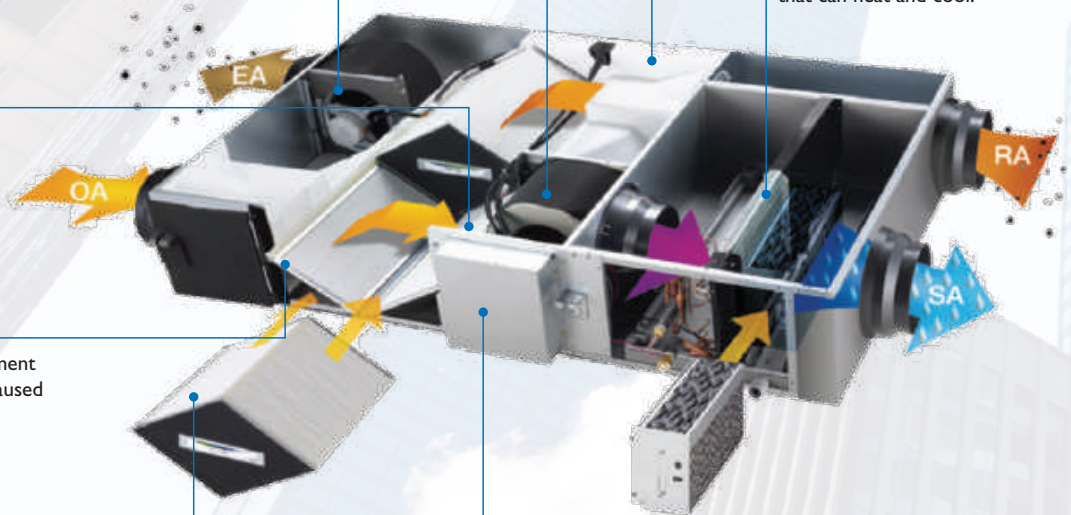
Electrical parts for product control

Direct Expansion (DX) Coil

Heating and cooling mode selection is available after turning on the ventilation due to the new DX Coil that can heat and cool.

Humidifier element (Optional)

A natural evaporating type humidifier is applied to produce more refreshing indoor air.



Next Generation VRF DC OUTDOOR UNITS

- Full Digital Inverter Technology
- Large single module
- Improved heating performance
- High energy efficiency
- Flexible installation
- Year-round climate control
- Smart management
- Reliable performance and durability
- High COP
- Cloud Service Platform
- Long Pipe distance
- Reduce expenses with installation
- Designed to be easy & Flexible
- R-410a Refrigerant



High efficiency
DC inverter
Compressor



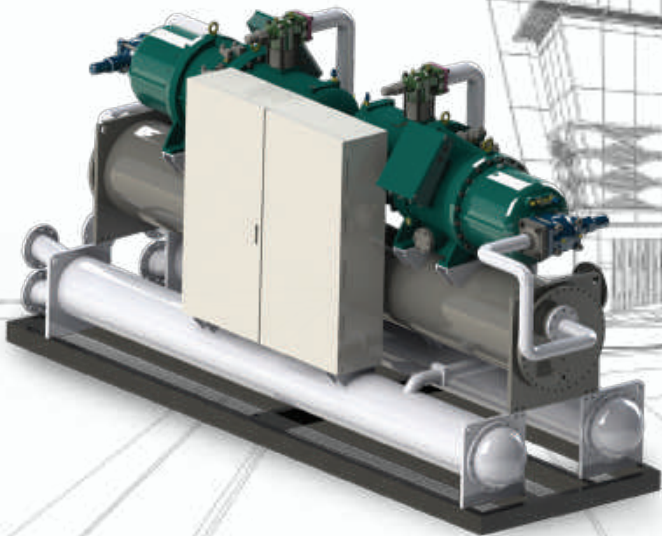
Dual EXVs
Control



Chiller

Features and benefits

- All you need in one place, delivered by highly experienced air conditioning experts
- High energy efficiency
- Products optimized for environmentally friendly, low GWP refrigerants
- Reduced applied costs and short payback times
- Dedicated customer service for around the world
- Eco labelling options
- All types of Chiller (Water Cooled, Air Cooled, turbo core)



Why HVAC

- It's literally a life saver
- Better air quality
- Fewer insects and parasites
- Improved work force efficiency
- Cooler tempers
- Easier sleep
- Protects furniture
- Prevents electronic devices from overheating
- Better security
- Fewer sweat stains



Brands



SAMSUNG

TOSHIBA

NICOTRA | Gebhardt

INFINAIR[®]

 **systemair**

Bry-Air[®]

 **BLAUBERG**
Ventilatoren

LOOP Engineering



Head Office:

210 Senpara Parbata ,
Mirpur-10,Dhaka-1216.
09611547290 || 01889882001

Chattogram Office :

Level 6,
Chattogram Software Technology Park ,
Agrabad, Chattogram.
09611547290 || 01816873323



01889882001



info@loopbd.com



www.loopbd.com