



ALL YOUR FIRE AND SAFETY NEEDS



Fire Extinguishers

a range of sizes and types to keep you safe

We offer an extensive range of extinguishers, from general purpose fire extinguishers to specific applications e.g. electrical fire, in a variety of sizes and finishes to meet your specifications and needs.

Each extinguisher is checked and approved before installation and is regularly inspected by our experienced technicians to ensure it is still in good working condition. We also offer training in the use of fire extinguishers, for more details, please see the fire and safety training section of this brochure.

To find out more about our Fire Extinguisher range and services
call **01889 882 001** or visit **www.loopbd.com**

Our Extinguishers

a comprehensive range

Our range of fire extinguishers are suitable for both domestic and commercial use and are available as either traditional or prestige (which has a higher quality finish and is a slightly higher specification).

Types of Extinguishers and Agents

Prestige Range Fire Extinguishers

Can be supplied in Water, Foam, CO2 and MultiChem



MultiChem /CO2

Gold Effect



MultiChem /CO2

Silver Effect



MultiChem /CO2

Copper Effect



Water Spray Extinguisher - Class A



Powder Extinguisher (Multi-Purpose) - Class A, B & C



Foam Extinguisher (AFFF) - Class A, B & C



Carbon Dioxide Extinguisher - Class B / Electrical Hazard



Wet Chemical - Class A & F

Fire Stands and Signs

Rather than just having your extinguishers standing in the corner of the room we are able to supply high quality extinguisher stands finished in a polished chrome effect with a clear, changeable sign affixed to the top.

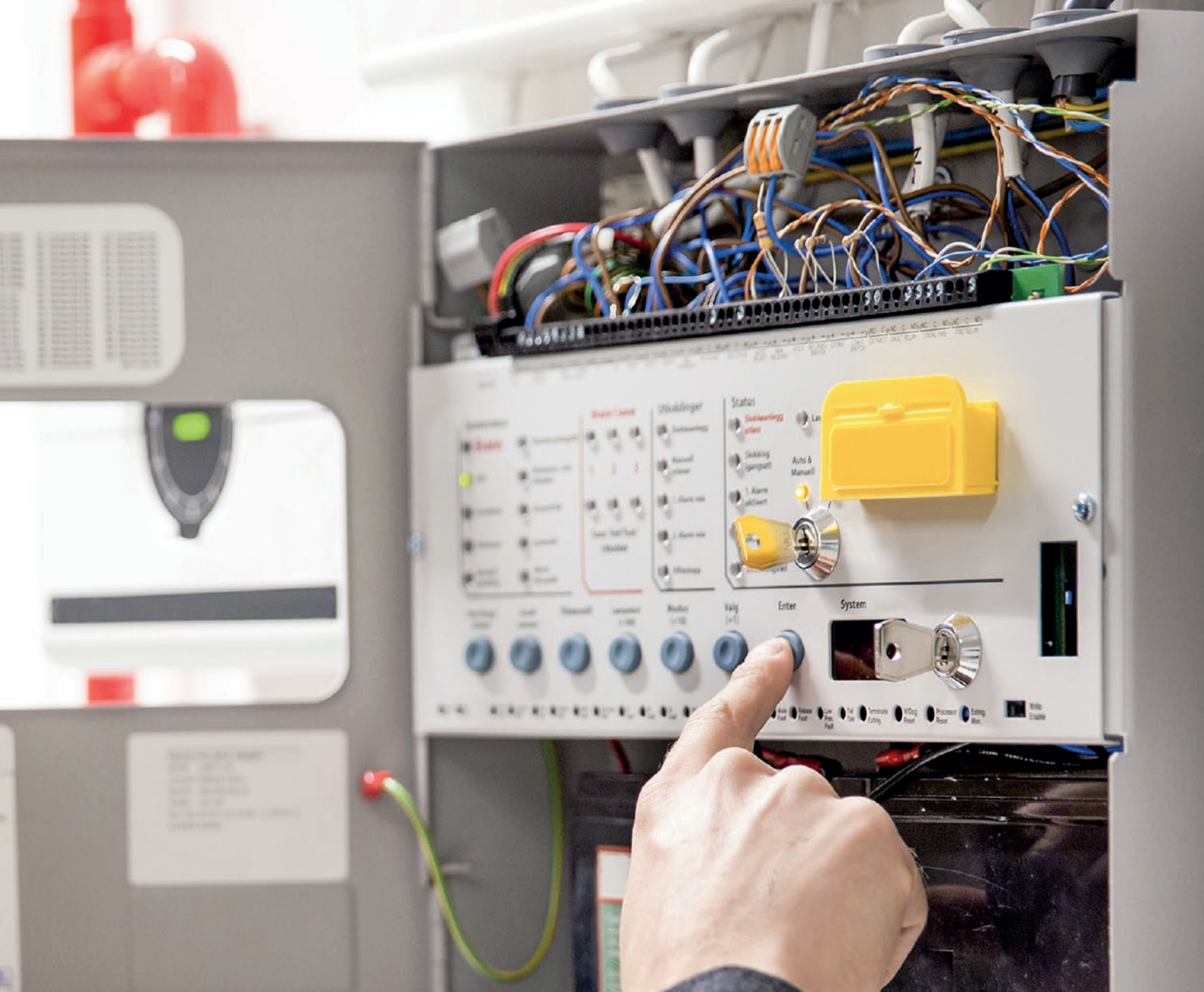
This allows you to ensure they are easy to access and clearly visible. Please contact us for more details.



Specifications

Each Fire Extinguisher has its own unique specifications according to size and extinguisher agent selected. To

find out more about our Fire Extinguisher range and services call **01889 882 001** or visit **www.loopbd.com** to discuss your requirements, we would be happy to advise you.



Fire Alarms

a range of systems for all building types

The danger posed by fire is constant. It makes no distinction between the time of day or day of the year. Therefore you need a system that is always on watch, constantly alert and always ready to react instantly to a fire.

Our fire alarm systems cover all types of buildings with a range of alarms from basic wired detection through to complex multizone and wireless alarms.

To find out more about our Fire Alarm services
call **01889 882 001** or visit **www.loopbd.com**

Our Fire Alarm Systems

protecting you from fire

Fire and Safety Solutions offer a range of fire alarms, from conventional addressable alarms, to the very latest in wireless technology. We offer the following Fire Alarm services:

- ✓ Supply and/or Installation
- ✓ Servicing (either ad hoc or maintenance contract)
- ✓ Fault Finding
- ✓ Survey/System Advice

Typically, most fire alarms are either 'non addressable', 'addressable' or 'wireless'.

Conventional alarm system

Typically installed in smaller businesses or properties, devices are connected directly into a control panel using fire proof cables. Devices are connected in Zones, e.g. Zone 1 ground floor, Zone 2 first floor. If a device activates the system makes it possible to identify approximately where in your premises the fire is within the zone. Conventional fire alarms are also more cost effective to install than other alarm types.

Addressable alarm system

Every device connected to an addressable system has a unique address so that when a fire is detected, the address is highlighted on the main control panel indicating which device has been activated. This indicates the exact location of a fire and enables a relevant fast safe response, potentially reducing possible fire damage. An addressable system can also reduce the number of false alarms, which can be chargeable by some fire services.

Wireless alarm system

Our wireless range of fire alarms, smoke detector and heat detector products are the most technically advanced and innovative hybrid fire solutions currently available. The system seamlessly integrates wired and wireless devices with industry standard control equipment to provide a cost effective solution for almost any application.

As the system does not have to have the devices connected by wire, this makes installation flexible and unobtrusive to a building's fabric. In addition, the modular nature of wireless systems means they can be scaled up or down, or moved to a new location quickly and efficiently.

As an independent Fire Safety specialist, we can supply, install and service all types of alarms. However, we work closely with EMS FireCell and recommend this system as being an excellent quality, reliable and cost effective solution for wireless systems, especially for retrofit and historic buildings.

Specifications

For full alarm details or to arrange a free fire safety survey to assess which alarm would be correct for your needs, Call us call **01889 882 001** or visit **www.loopbd.com**





**Dry
Riser
Outlet**

Dry Riser Servicing

keep your building legal and safe from fire

A dry riser is a network of pipes running inside tall buildings (or those with restricted access) to enable the fire service to pump water to areas within the building when tackling fires high up.

Each installation must then be serviced and maintained regularly in order to not only be safe but to comply with current regulations.

To find out more about our Dry Riser Servicing service
call **01889 882 001** or visit **www.loopbd.com**

Our dry riser service

a complete solution for all dry risers

The building's Responsible Person (or RP) is legally required to ensure the system is maintained which means a full annual pressure test plus a six monthly visual check for dry risers in buildings between 18 and 60 metres (anything over 60 metres or 18 stories must have wet risers).

Maintenance

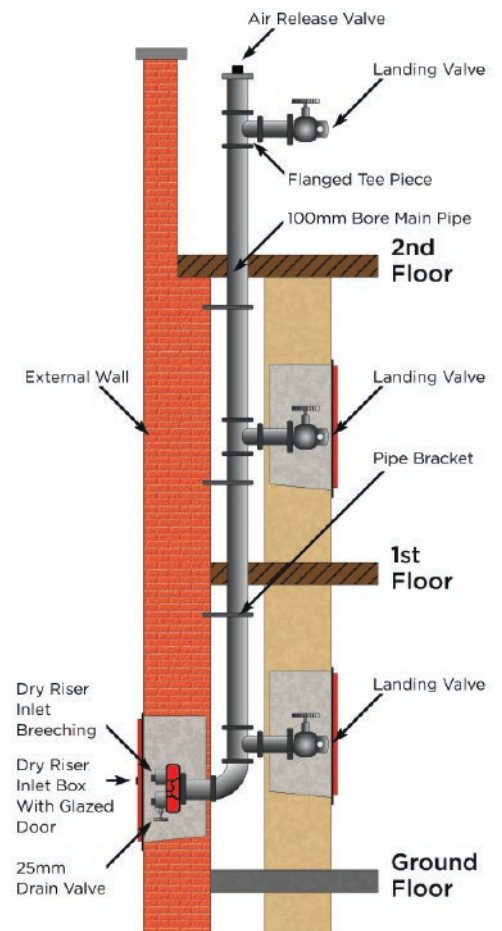
Dry risers are designed to quickly deliver a lot of water high up in the building. Like all equipment, it needs to be maintained, not only for wear or age related failure, but also vandalism. It is essential to have them regularly maintained and serviced, which is why it is a **legal requirement**. Loop carry out a full annual pressure test plus a 6 monthly visual check to ensure the equipment is serviceable.

Yearly Pressure Test

Dry risers need to be pressure tested once a year up to 12 bar for a minimum of 15 minutes. This is the only effective way of testing the equipment. The breeching connector at ground floor or at Fire Service Access Level, along with landing valves and outlets are checked for leaks or faults. If any of the parts require replacement, we will re-test the system before it is signed off as safe and the certificate issued.

Six Monthly Visual Test

To ensure there is not a long period of time between tests, there is a requirement that the dry riser system is visually inspected every 6 months. This is completed by a trained and qualified fire safety technician to check for any obvious damage, missing parts or faults which would need to be replaced in order to make the dry riser safe and effective.



Typical Dry Riser Installation

Key Points

- ✓ Correct inspection and maintenance of dry risers is a legal requirement
- ✓ Dry risers require an annual pressure test
- ✓ In addition a 6 monthly visual inspection must be performed
- ✓ Dry risers are vital for fire fighting in tall buildings, correct maintenance is essential

How often?

Dry risers need to be pressure tested once a year up to 12 bar for a minimum of 15 minutes in order to comply.

In addition, a 6 monthly visual inspection is carried out to ensure that there is no obvious damage, leaks or missing items of equipment.

Who will do my test?

Your Dry Riser maintenance and inspections will be carried out by a qualified and experienced technician, Each member of the Loop team has been fully DBS Enhanced cleared and is externally certified and trained. We only employ personnel who respect and adhere to our high standards.

Specifications

To find out more about our Dry Riser Servicing Service please call us on our number, call **01889 882 001** or visit **www.loopbd.com**



Fire Suppression Systems

innovation, engineering & fire prevention

Automatic fire suppression systems control and extinguish fires without the need for human intervention. We install, service and maintain a variety of fire suppression systems, both standalone and system integrated.

We supply, install and service FIREDETEC Compact Fire Suppression Systems as we feel it is the superior product of choice within the fire suppression market. However, we also can service and maintain other fire suppression systems upon request.

To find out more about our Fire Suppression System range and services
call 01889 882 001 or visit www.loopbd.com

What is fire suppression?

how does it work?

DIMES

Continually monitors cylinder pressure with 99% accuracy ensuring the system is always properly charged and ready for use in the event of a fire.

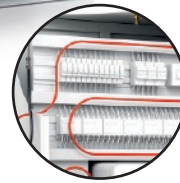


Extinguish at Source

Because the sensor tubing is flexible, it can easily be installed directly inside machines and enclosures – directly among circuitry and mechanics.

Instant Suppression

The sudden tube de-pressurisation actuates a valve, flooding the enclosed area with extinguishing agent - reaching 95% agent concentration level within less than 10 seconds.



Early Detection

The heat from the fire causes the pressurised sensor tube to burst at the hottest spot (approx. 230° F / 110° C) and discharge the extinguisher.

Standard or bespoke solutions

Fire suppression systems are available as a range of either industry targeted solutions, as shown below, or as a fully bespoke system to suit your exact requirements.



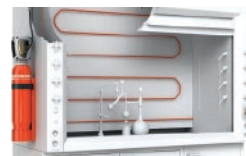
CNC Machine Suppression



Kitchen Suppression



Electrical Cabinets Suppression



Fume Cupboard Suppression



Vehicle Suppression

Specifications

Each Fire Suppression system has its own unique specifications according to size and extinguishing agent selected. call **01889 882 001** or visit **www.loopbd.com**



Servicing and Maintenance

keeping your fire safety equipment in working order

Loop offer a range of service and maintenance options from a one-off service or maintenance through to annual service contract plans. We can also provide a 24hr a day, 365 days a year emergency call out service.

To find out more about our Servicing and Maintenance Services
call 01889 882 001 or visit www.loopbd.com

Our fire safety servicing giving you peace of mind

From single fire extinguishers to complex multi-zone fire alarm systems, regular servicing ensures your fire safety equipment is fully functioning should you need it.

As well as prolonging the serviceable life of the equipment, many commercial insurance companies insist that your alarm is serviced on an annual basis. Failure to do so could invalidate your insurance. We can provide a range of different service and maintenance options but typically these are:

- ✓ 24hrs a day, 7 days a week emergency call out service
- ✓ Ad-hoc service, maintenance or repair work
- ✓ Annual service contracts

Every business is different so we tailor our service to suit your requirements and business needs.

We service & maintain all types of fire safety equipment, typical items are:

- ✓ Fire extinguishers
- ✓ Fire alarm systems
- ✓ Dry riser systems
- ✓ Fire suppression systems
- ✓ Emergency lighting

One of the key differences between our service technicians and that of many other fire safety companies, is that our staff are all salaried and **are not on any form of commission** to sell additional services or products to you. Therefore, you can be fully confident that any recommendations or new parts required are genuinely needed for your system rather than because it will provide additional income to the technician.

In addition to servicing your fire safety equipment, we also provide a site information card which details the location of all the fire safety equipment within your building and also the service record of each item. You can get a complete overview of all your fire safety systems and the work carried out on them.



✓ Key Points

- ✓ Our technicians are salaried and not on commission
- ✓ An annual service may be a condition of your commercial insurance
- ✓ Servicing can prolong the life of the equipment as well as offering you peace of mind it is working correctly

📅 How often?

Each item of fire detection or safety equipment varies depending on what it is and its location.

We can advise you on the correct service and maintenance intervals or schedule for your specific equipment.

👤 Who will do my service?

Our Technicians not only have practical experience, but also have the correct equipment to carry out servicing and more importantly - the knowledge and understanding to correctly maintain and replace any items that require renewing. Plus, they are all certified to carry out the work.

Specifications

To find out more and for full details of our Fire Safety Servicing, please call us on **call 01889 882 001** or visit **www.loopbd.com**

Other products and services

a selection of other fire safety services



Fire Risk Assessments

Fire risk assessments check to ensure you comply with the current fire safety laws. Fire risk assessments are required by law if you're an employer, owner, landlord or occupier of business or non-domestic premises.

The assessment identifies appropriate fire detection, suppression and extinguishing devices for your building. In addition, the assessment will look for potential sources of ignition and fuel, highlighting the hazards and recommending ways of reducing these, plus checking or identifying a marked escape route should a fire break out. All of the findings of the fire risk assessment will be recorded and a full report will be issued.

Once your fire risk assessment is complete, we will advise of any changes and if applicable, quote to provide and install any recommended equipment. From the findings of the fire assessment and advice given, you will be better placed to judge the potential risks of fire or take action to reduce them.



Fire Evacuation Chair

Evacuation chairs are available in three types:

Manual and skid evacuation chairs:

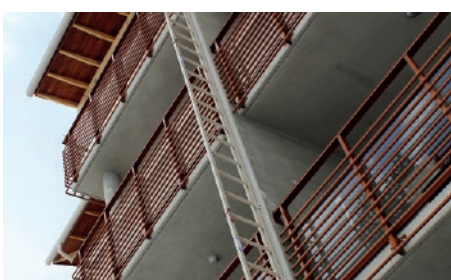
The simplest type of evacuation chair consists of a frame holding a seat, upon which the person being evacuated can be securely seated. The chair should offer a smooth transition down the stairs, and minimise lifting and manual handling by the operator.

Manual auto-break evacuation chairs:

Evacuation chairs with an auto-brake function are versatile and easy to operate, providing a controlled descent with the auto-brake acting as a speed regulator.

Powered evacuation chairs and stair climbers:

In addition, powered evacuation chairs and stair climbers have an on-board battery to power the controlled descent of the evacuation chair. This allows the user to be evacuated both upstairs and downstairs



Foldout Fire Escape Ladder

We also provide high quality fire escape ladders which can be quickly deployed to create a sturdy, safe escape route. When not in use the low-profile ladder (74mm) folds out of the way.



Loop Engineering is a reputable MEP contracting company in Bangladesh, offering comprehensive engineering services.

With a focus on customer satisfaction, we provide tailor-made solutions that prioritize cost-effectiveness, quality, and timely project completion.

Our team of experienced Project Managers ensures the highest level of service and oversees all aspects of MEP Engineering.

We stay at the forefront of technology, continuously upgrading our systems to deliver innovative solutions.

Our customer-friendly approach includes efficient project management and flexibility to accommodate unique client requirements.

We stand out with our one-stop business concept, offering seamless design, construction, and interior solutions with comprehensive materials support.

Get in touch

we'd love to hear from you

Head Office:

210 senpara parbata,
Mirpur-10,
Dhaka-1216.
09611547290 || 01889882001

Chattogram Office :

Level 6,
Chattogram Software Technology Park,
Agrabad, Chattogram.
09611547290 || 01816873323

www.loopbd.com
www.facebook.com/loopengineeringbd